



Mv Alert

General Particulars	
Owners Style	BB Shipholding 1 B.V.
Built	2000 / Daewoo – Mangalia.
Flag	Dutch
Homeport	Rotterdam
Call sign	P.E.S.M
IMO	9213715
LOA	80,27 m.
Length b.p.p.	76,17 m.
Beam	11,42 m.
Draught fully laden	3,20 m.
Depth moulded	6,65 m.
Airdraft in ballast	4,50 m. (Bridge lowered, all masts lowered)
Grain/bale capacity	93.800 cbft / 2662 m3.
DWAT	1786 mts.
DWCC Summer	1700 mts.
DWCC Winter	1650 mts.
GT / NT	1499 mt. / 579 mt.
Class	DNV GL
Ice Class	Nil.
P&I	NNPC
Holds / Hatches	
Type vessel	General Cargo / Full box / Singledecker double skinned.
Holds / Hatches	1 Hold 52,50 m. x 9,12 m. x 5,65 m.
	1 Hatch 52,50 m. x 9,12 m. pontoon type (5 pcs).
Tank top	Steelfloored
Permissible loads tanktop	Max 15,00 tons per sqm.
Permissible loads deck	Max 1,5 tons per sqm.
Bulkheads	Nil.
Airchanges	6 p/hr basis empty hold (electrical ventilation)
Container intake	-
Co2 fitted	-
Engine	
Main engine	2 x Volvo Penta – ttl 742 kw.
Speed / consumption	Ballast: 2800 ltr / day @ 9,5 knots. / Laden: 3500 ltr / day @ 9 knots.
Fuel	MGO - ISO 8217:2005 DMA max. 1% Sulphur.
Bow thruster	280 Kw.
Capacities	83 m3 MGO.
	1308 m3 Ballast. / 36 m3 Fresh water.
Communication	
Telephone	+31 (0)6 2957 8165
E-mail	alert@dutchowners.nl

ERA Chartering B.V.

As brokers only

Oslo 16, 2993 LD Barendrecht, The Netherlands VAT ID: NL859851952B01

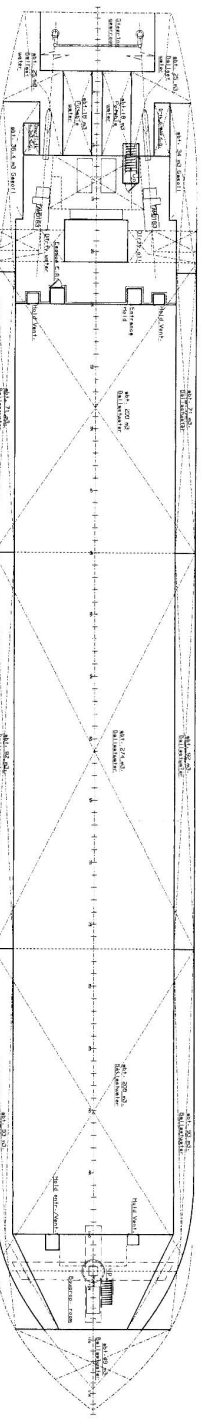
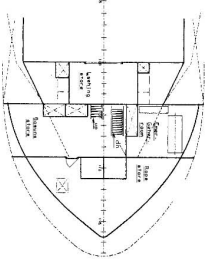
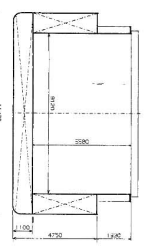
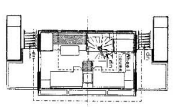
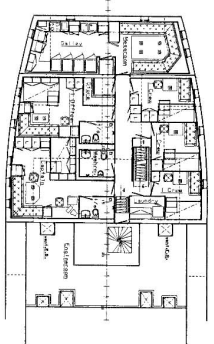
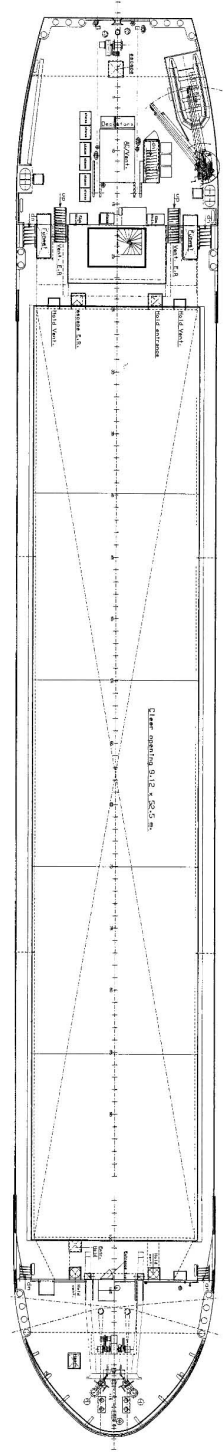
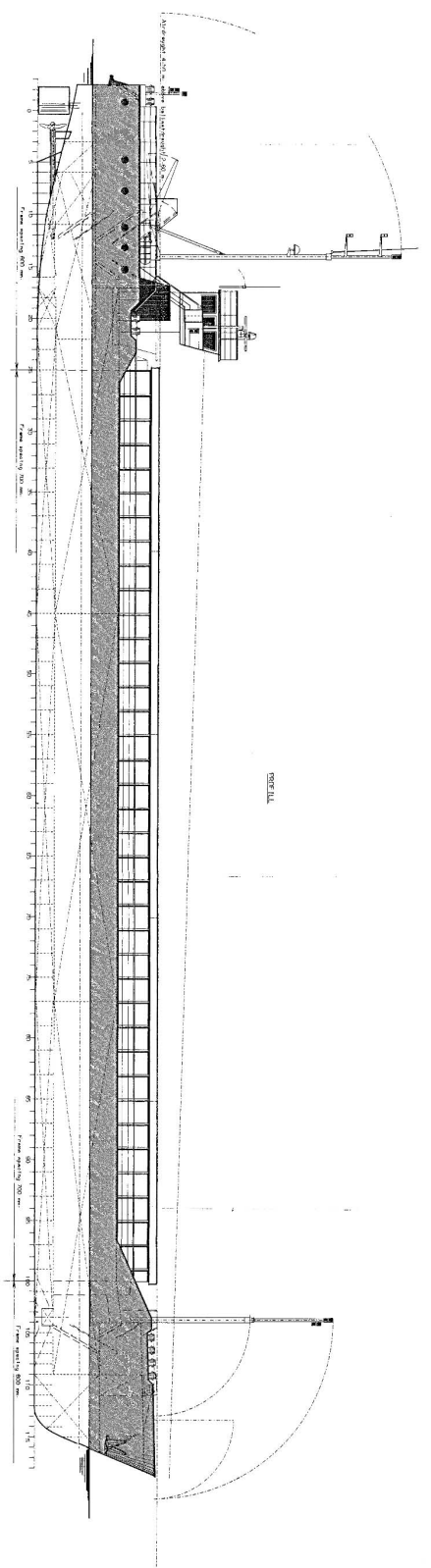
info@era-chartering.com / www.era-chartering.com

Tel office: +31 (0) 10 2688 080

Mob: +31 (0) 6 1569 3508 (Ramses de Vries)

Mob: +31 (0) 6 5055 5306 (Marcel Reabel)

Mob: +31 (0) 6 2258 6236 (Sebastian Perdok)



1	ROOFING AND FORECASTLE DECK PLATING	2-20-20
2	WAVE ACTE	20-20
3	ROOFING AND FORECASTLE DECK PLATING	2-20-20
4	ROOFING AND FORECASTLE DECK PLATING	2-20-20
5	ROOFING AND FORECASTLE DECK PLATING	2-20-20
6	ROOFING AND FORECASTLE DECK PLATING	2-20-20
7	ROOFING AND FORECASTLE DECK PLATING	2-20-20
8	ROOFING AND FORECASTLE DECK PLATING	2-20-20
9	ROOFING AND FORECASTLE DECK PLATING	2-20-20
10	ROOFING AND FORECASTLE DECK PLATING	2-20-20
11	ROOFING AND FORECASTLE DECK PLATING	2-20-20
12	ROOFING AND FORECASTLE DECK PLATING	2-20-20
13	ROOFING AND FORECASTLE DECK PLATING	2-20-20
14	ROOFING AND FORECASTLE DECK PLATING	2-20-20
15	ROOFING AND FORECASTLE DECK PLATING	2-20-20
16	ROOFING AND FORECASTLE DECK PLATING	2-20-20
17	ROOFING AND FORECASTLE DECK PLATING	2-20-20
18	ROOFING AND FORECASTLE DECK PLATING	2-20-20
19	ROOFING AND FORECASTLE DECK PLATING	2-20-20
20	ROOFING AND FORECASTLE DECK PLATING	2-20-20
21	ROOFING AND FORECASTLE DECK PLATING	2-20-20
22	ROOFING AND FORECASTLE DECK PLATING	2-20-20
23	ROOFING AND FORECASTLE DECK PLATING	2-20-20
24	ROOFING AND FORECASTLE DECK PLATING	2-20-20
25	ROOFING AND FORECASTLE DECK PLATING	2-20-20
26	ROOFING AND FORECASTLE DECK PLATING	2-20-20
27	ROOFING AND FORECASTLE DECK PLATING	2-20-20
28	ROOFING AND FORECASTLE DECK PLATING	2-20-20
29	ROOFING AND FORECASTLE DECK PLATING	2-20-20
30	ROOFING AND FORECASTLE DECK PLATING	2-20-20
31	ROOFING AND FORECASTLE DECK PLATING	2-20-20
32	ROOFING AND FORECASTLE DECK PLATING	2-20-20
33	ROOFING AND FORECASTLE DECK PLATING	2-20-20
34	ROOFING AND FORECASTLE DECK PLATING	2-20-20
35	ROOFING AND FORECASTLE DECK PLATING	2-20-20
36	ROOFING AND FORECASTLE DECK PLATING	2-20-20
37	ROOFING AND FORECASTLE DECK PLATING	2-20-20
38	ROOFING AND FORECASTLE DECK PLATING	2-20-20
39	ROOFING AND FORECASTLE DECK PLATING	2-20-20
40	ROOFING AND FORECASTLE DECK PLATING	2-20-20
41	ROOFING AND FORECASTLE DECK PLATING	2-20-20
42	ROOFING AND FORECASTLE DECK PLATING	2-20-20
43	ROOFING AND FORECASTLE DECK PLATING	2-20-20
44	ROOFING AND FORECASTLE DECK PLATING	2-20-20
45	ROOFING AND FORECASTLE DECK PLATING	2-20-20
46	ROOFING AND FORECASTLE DECK PLATING	2-20-20
47	ROOFING AND FORECASTLE DECK PLATING	2-20-20
48	ROOFING AND FORECASTLE DECK PLATING	2-20-20
49	ROOFING AND FORECASTLE DECK PLATING	2-20-20
50	ROOFING AND FORECASTLE DECK PLATING	2-20-20



MAIN PARTICULARS
 Length over all 30.50 m
 Length between perpendiculars 27.25 m
 Depth 4.25 m
 Draught 4.25 m
 Displacement 1000 m³
 Net tonnage 1000 m³
 Gross tonnage 1000 m³
 Power 1000 kW
 Speed 10 knots
 Range 1000 miles
 Fuel capacity 1000 m³
 Water capacity 1000 m³
 Ballast capacity 1000 m³

CONSHIP
PATTE SHIPYARDS
volharding
 GENERAL MULTI-PURPOSE LOW-RIFLE
 ARRANGEMENTS/FAIRING/SILVER CARVED VESSEL
 01 01 10 01 01 10 01